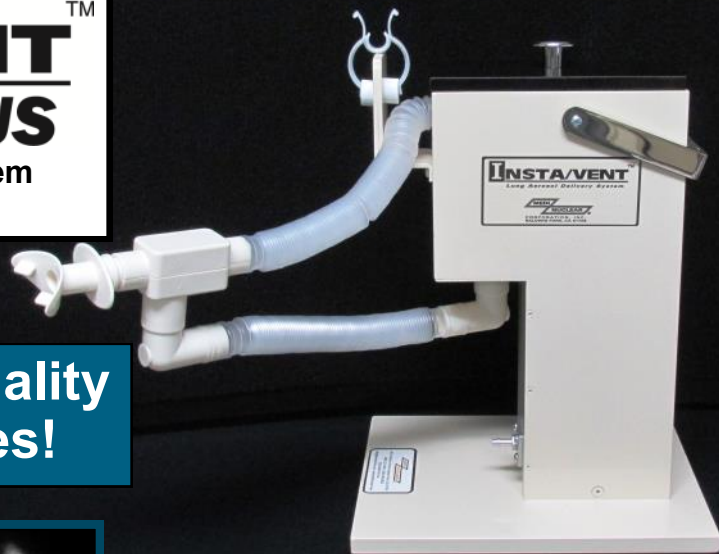
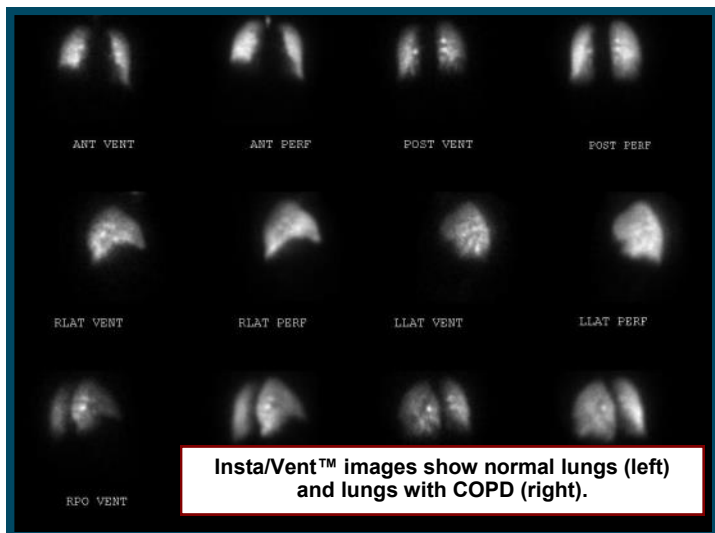
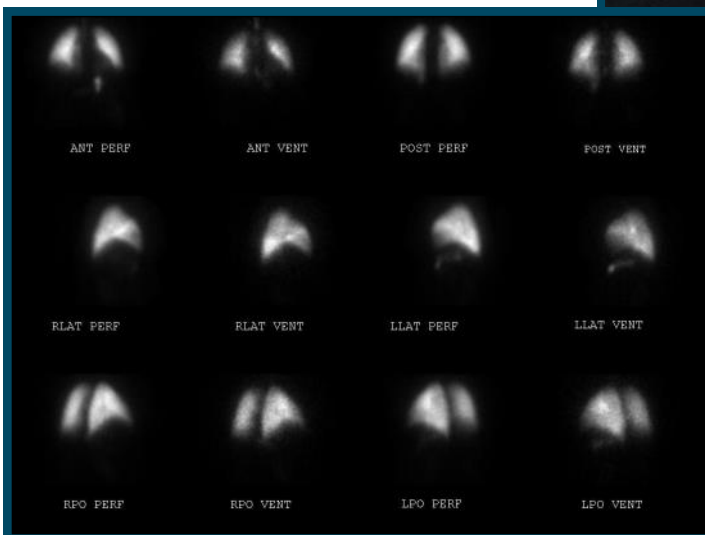


# INSTA/VENT™ PLUS

Radioaerosol Lung Imaging System  
Model IV-600 Series



Unsurpassed image quality  
in less than 2 minutes!



## PRODUCT OVERVIEW

Medi/Nuclear's proprietary nebulizer produces ultrafine particles with MMAD of 0.28  $\mu\text{m}$ , most of which are under 1  $\mu\text{m}$  and 40.8% less than 0.2  $\mu\text{m}$ . These ultrafine particles minimize the possibility of central deposition and travel deep into the lungs, resulting in superior alveolar delivery and sharp, clear images of unsurpassed quality with Planar and SPECT.

The Insta/Vent™ Plus system features unidirectional airflow, which allows each breath to be fully medicated, avoids particle growth prior to inhalation, and virtually eliminates breathing resistance, thereby supporting shallow breathers. An internal airflow control mechanism and conserving reservoir contribute to faster dosing, which may be done in as little as 30 seconds with a healthy patient, or several minutes with a sick or shallow breathing patient. Special kits for ventilator dependent patients are also available.

As a closed-circuit system, Insta/Vent™ Plus provides safer aerosol delivery. Tidal breathing minimizes the risk from patient coughs. Kits with face mask allow coughs to be directed into a proprietary HEPA filter with >99.97% trapping efficiency. Kits are fully disposable and the shield easily cleaned between patients. In addition to a shield's full lead lining, the nebulizer is protected by an internal lead cylinder and the mouthport opening by a lead lined "L" bracket.

[www.medinuclear.com](http://www.medinuclear.com)



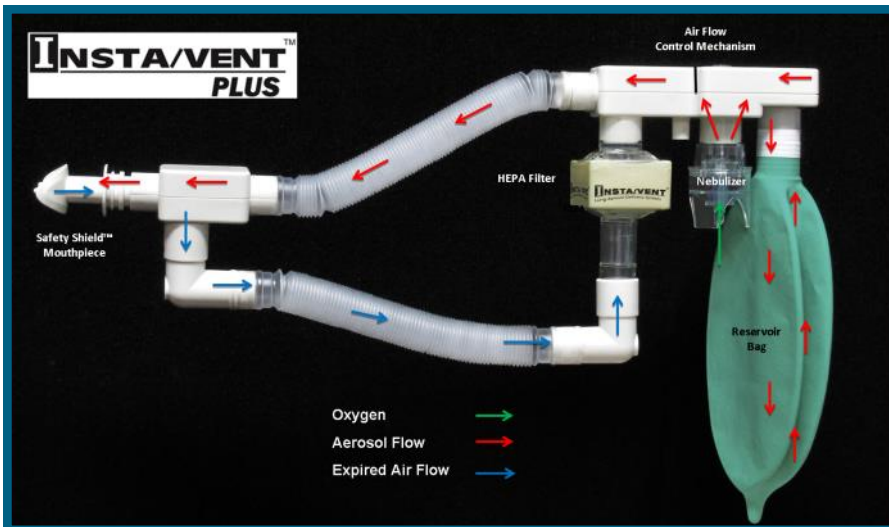
Medi/Nuclear® Corporation  
800.321.5981 / 626.960.9822 / 626.960.8700 Fax  
info@medinuclear.com  
4610 Littlejohn Street, Baldwin Park, CA 91706

## INSTA/VENT™ PLUS FEATURES AND BENEFITS

- ◆ Full patient dosing in less than 2 minutes.
- ◆ Excellent 100k-150k count image in just 1 minute.
- ◆ Proprietary nebulizer produces particles with MMAD of 0.28  $\mu\text{m}$ : 97.9% under 1  $\mu\text{m}$  with 40.8% less than 0.2  $\mu\text{m}$ .
- ◆ Proprietary HEPA filter with >99.97% trapping efficiency.
- ◆ SPECT imaging may be performed using various radiotracers.
- ◆ Conserving reservoir and air flow control mechanism contribute to rapid dosing by saving medication so it can be rapidly delivered during inhalation.
- ◆ Unidirectional air flow allows each breath to be fully medicated, virtually eliminates breathing resistance to support shallow breathers and maintains fine particle size until inhalation for deeper lung penetration.
- ◆ Scuba-style Safety Shield™ Mouthpiece standard.
- ◆ Kit with air cushioned face mask available for coughing patients or those unable to manage a mouthpiece or nose clip.
- ◆ Expandable 6-24 inch flex-tube for easy patient positioning upright or supine.
- ◆ Special kits for ventilator patients fit standard 15mm endotracheal and tracheotomy tubes.
- ◆ Easy cleaning and disinfecting between patients.
- ◆ Activity required: 40 mCi in a minimum of 2 mL.
- ◆ FDA cleared and American made for quality assurance.



## INSTA/VENT™ PLUS AIRFLOW DIAGRAM

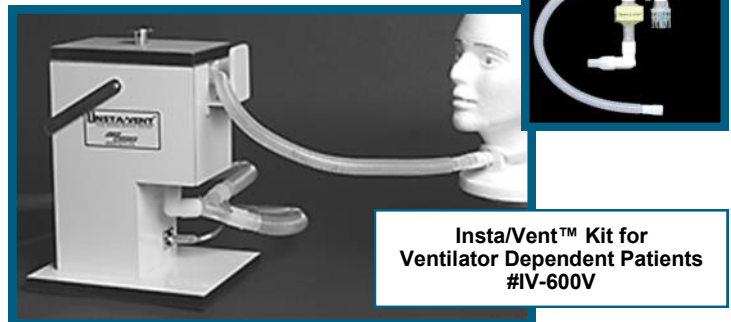


- ◆ As a patient inhales, medication from the nebulizer moves through the top tube, and into the mouthpiece.
- ◆ When the patient exhales an internal airflow control mechanism closes and exhalation is directed through the bottom tube and into a HEPA filter.
- ◆ During exhalation, air continues to flow through the nebulizer into a breathing bag, which acts as a reservoir to store aerosol that would normally be wasted during exhalation.
- ◆ When the next breath is taken, the patient immediately inhales the medication that has filled the top tube and also the medication from the breathing bag.

## SPECIAL KITS FOR VENTILATOR DEPENDENT PATIENTS

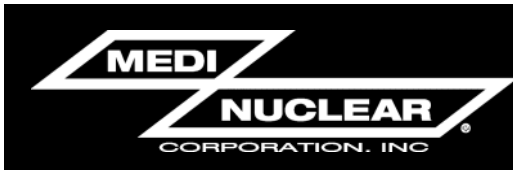
#IV-600V

Special radioaerosol lung imaging kits for patients on ventilators fit all standard 15mm endotracheal and tracheotomy tubes. Kits come complete in a small case quantity of just 6 each and are used with the standard Insta/Vent™ lead shield.



Insta/Vent™ Kit for Ventilator Dependent Patients #IV-600V

[www.medinuclear.com](http://www.medinuclear.com)



Medi/Nuclear® Corporation  
 800.321.5981 / 626.960.9822 / 626.960.8700 Fax  
 info@medinuclear.com  
 4610 Littlejohn Street, Baldwin Park, CA 91706

## INSTA/VENT™ KIT SPECIFICATIONS

Nebulizer:	Medi/Nuclear® NEB-3A+ Jet Nebulizer
Nebulization Rate:	0.185 mL/min
Standard Flow Rate:	10 L/min
Max. Reservoir Volume:	6 mL
Working Reservoir Volume:	2 mL
MMAD:	0.28 micron
Particle Size Distribution:	<0.2µM 40.8%
	0.2µM to 1.0µM 57.1%
	1.0µM to 5.0µM 2.1%
	>5.0µM 0
Airflow:	Unidirectional
Dosing:	Approximately 2 minutes.
Counts:	100k-150k in 1 minute.
Filter:	Medi/Nuclear® HEPA with >99.97% trapping efficiency
Breathing Bag:	Latex free.
Tubing:	Expands 6-24 inches



## INSTA/VENT™ LEAD SHIELD #IV-601A

### OVERVIEW

The Insta/Vent™ lead shield may be used with the single tube Insta/Vent™ kit, the unidirectional Insta/Vent™ Plus kit, or the special kit for ventilator dependent patients.

### FEATURES

- ◆ Full lead lining at or above recommended levels.
- ◆ Lead cylinder inside shields adds extra protection around nebulizer.
- ◆ Barbed oxygen hose connection for secure fit.
- ◆ Internal pressure port for convenient kit installation.
- ◆ Powder coated exterior for ease of cleaning.
- ◆ Handle for ease of carrying.
- ◆ Rubber feet protect surfaces.

### SPECIFICATIONS

Material:	Aluminum with Powder Coating
Weight:	21 lbs.
Dimensions:	10 1/8 in. L x 8 in. W x 13 in. H
Lead Lining:	1/16 in. interior sides.
	1/8 in. under lid.
	1/8 in. internal cylinder.
	Lead lined nose piece.



Model No.	ORDERING INFORMATION	Qty
IV-600	InstaVent™ Kit, with Single Tube, HEPA Filter and scuba style Safety Shield™ Mouthpiece	24/cs
IV-600M	Insta/Vent™ Kit with Single Tube, HEPA Filter and Air-Cushioned Mask	24/cs
IV-600V	InstaVent™ Kit for Ventilator Dependent Patients	6/cs
IV-600P	Insta/Vent™ Plus Kit with Two Tubes, HEPA Filter and scuba style Safety Shield™ Mouthpiece	24/cs
IV-600PM	Insta/Vent™ Plus Kit with Two Tubes, HEPA Filter and Air-Cushioned Mask	24/cs
IV-601A	Insta/Vent™ Lead Shield	Each

[www.medinuclear.com](http://www.medinuclear.com)



Medi/Nuclear® Corporation  
800.321.5981 / 626.960.9822 / 626.960.8700 Fax  
info@medinuclear.com  
4610 Littlejohn Street, Baldwin Park, CA 91706

# INSTA/VENT™ PLUS: ENHANCED ADHERENCE TO ALARA AND AUC\*

\*ALARA: As Low As Reasonably Achievable  
AUC: Appropriate Use Criteria

## Improvement in Patient Care

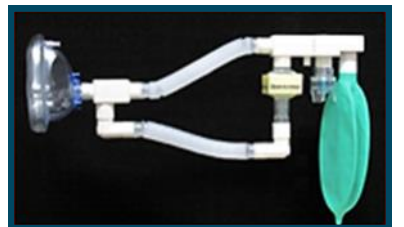
- ◆ Conserving Reservoir and Air Flow Control Mechanism provide dosing in less than 2 minutes for improved patient compliance.
- ◆ Unidirectional airflow maintains fine particle size until inhalation, allows each breath to be fully medicated, and minimizes breathing resistance, thereby supporting shallow breathers.
- ◆ Insta/Vent™ Plus may be used for SPECT imaging.
- ◆ Normal tidal breathing, as opposed to deep breathing or breath holding, reduces the possibility of hot spots, central deposition and coughing.
- ◆ Proprietary nebulizer produces ultrafine particles (.28 µm) which are delivered quickly and provide superior lung deposition for clear, sharp images.
- ◆ Scuba-style Safety Shield™ Mouthpiece reduces mouthpiece slippage and possible leakage from the corners of the mouth. The snap on cap is used to collect saliva during removal, for a quick and safer disposal.
- ◆ Complete kits with air cushioned face mask are available for coughing patients or those unable to use a mouthpiece and/or nose clip.

## Improvement in Radiation Safety

- ◆ Faster dosing minimizes time for possible exposure.
- ◆ Lead shield is completely lead lined at or above recommended levels.
- ◆ Lead cylinder inside shield surrounds nebulizer for extra protection.
- ◆ External lead lined "L" bracket provides protection at mouthport opening.
- ◆ Closed circuit system reduces chance of escape by contaminated aerosols.
- ◆ Scuba-style Safety Shield™ Mouthpiece reduces possible leakage from the corners of the mouth. The snap on cap is used to collect saliva during removal for safer disposal.
- ◆ Proprietary HEPA filter provides >99.97% trapping efficiency and has no external port opening.

## Other Benefits

- ◆ Set-up is quick and dosing rapid, thereby saving valuable tech time.
- ◆ Shield may be easily cleaned/disinfected between patients.
- ◆ Special kits for ventilator dependent patients available in small case of 6 each.
- ◆ Insta/Vent™ Plus may be used with DTPA, PYP, MDP, MIBI, Sulphur Colloid, etc. to accommodate pricing fluctuations and imaging needs..
- ◆ Secure-Fit Oxygen Tubing provides optimal oxygen flow for more consistent results.
- ◆ Complete kits may be ordered with Safety Shield™ Mouthpiece or air cushioned face mask.
- ◆ Insta/Vent™ Plus is cleared by the United States Food and Drug Administration (FDA).
- ◆ For quality assurance, Insta/Vent™ Plus is manufactured in an ISO certified facility in USA.



[www.medinuclear.com](http://www.medinuclear.com)



Medi/Nuclear® Corporation  
800.321.5981 / 626.960.9822 / 626.960.8700 Fax  
info@medinuclear.com  
4610 Littlejohn Street, Baldwin Park, CA 91706